

Rittal – The System.

Faster – better – everywhere.

Component shelf 2 U, static installation – DK 7119.250

Date : Oct 24, 2019

ENCLOSURES

POWER DISTRIBUTION

CLIMATE CONTROL

IT INFRASTRUCTURE

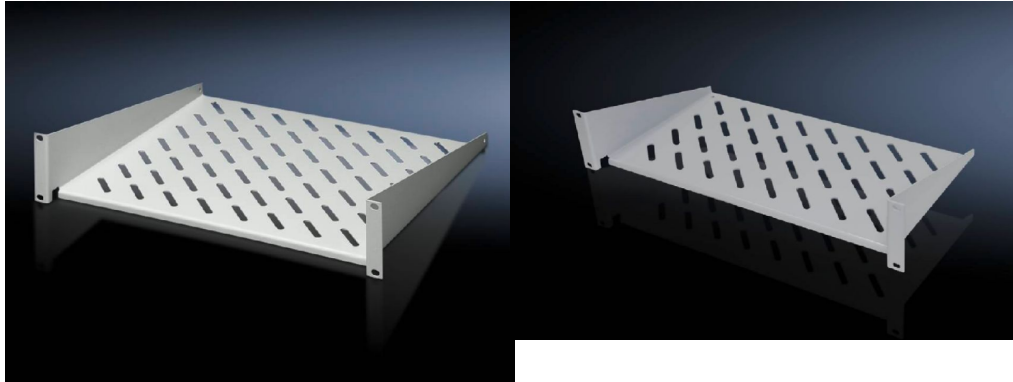
SOFTWARE & SERVICES

FRIEDHELM LOH GROUP



Component shelf 2 U, static installation – DK 7119.250

created: 24.10.2019 build on www.rittal.com/uk-en



Product description

Design:	482.6 mm (19")
Description:	For mounting between 482.6 mm (19") mounting angles.
Applications:	For mounting between 482.6 mm (19") mounting angles.
Material:	Sheet steel
Surface finish:	Spray-finished
Colour:	RAL 7035
Note:	Not suitable for combination with telescopic slides.

Product features

Dimensions:	Width: 482.6 mm Width: 19" Depth: 250 mm
Units:	2 U
Load capacity:	25 kg surface load, static
Packs of:	1 pc(s).
Weight/pack:	2.37 kg

Copper weight (kg per piece):	0
EAN:	4028177187207
Customs tariff number:	94039010
ETIM 6.0:	EC002620
eCl@ss 8.0/8.1:	27189261
eCl@ss 6.0/6.1:	27189261
Product description:	DK Component shelf, WHD: 482,6x2 Ux250 mm, 25 kg, static, distance between levels:, static installation, For 482.6 mm (19") system punchings, RAL 7035